

R2 Product Datasheet

Fire rated downlight dimmable with on/off or dimmer switch

Product Data

Warranty	5 years
Applications	Interior
Certification(s)	CE, RoHS

Physical Data

Colour Finish	White, polished chrome, titanium (all bezels included)
Luminaire Fixing	Recessed
Construction Material	Aluminium
Diffuser Type	Polycarbonate
Unit Weight (Kg)	0.35

Electrical Data

Voltage Range	AC220-240V
Power Factor	>0.90
Inrush Current	<60A
Running Current	DC350mA
Protection Class IEC	Class II

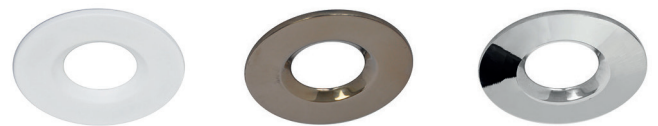
Performance Data

Wattage	8W
Efficacy	~100 Lm/W
Operating Temperature	-20°C to +45°C (0°C to 40°C for emergency)
Beam Angle	38°
Operating Hours	>50000
CRI	>85 Ra
Flicker free	Yes
IP Rating	IP65
IK Rating	IK08
Macadam Ellipse	≤3 sdcM
L70 B50	100,000 hours
L80 B50	90,000 hours
L90 B50	42,000 hours

*R2 DIMMING OPERATION

First flick of switch: 100% light output.
Switch off and back on within 2 secs: 50% light output.
Switch off and back on again within 2 sec: 10% light output.

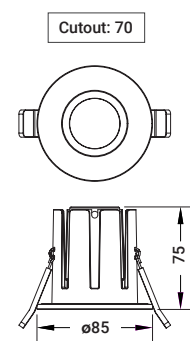
Energy saving R2 Dimming Technology*



Part Codes

	°Kelvin	Lumens	Dimming
R095501	3000K	802	R2 (step dimming with on/off switch)
R095502	4000K	802	R2 (step dimming with on/off switch)
R095503	3000K	802	Mains
R095504	4000K	802	Mains

Dimensions (mm)



R2 Family

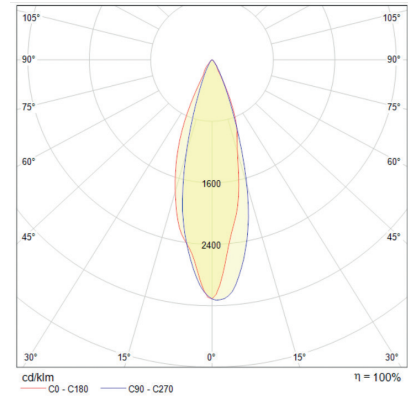
Part Codes: R095501-4

Suffix	Option
/DD	DALI dimming
/DL	0-10V dimming
/DSI	DSI dimming

} Add dimming suffix (mains or R2 dimmable as standard)

Example: **R095503/DD**
R2 in 3000K, with a DALI driver

Light Distribution:



R2 add on items

Part code	Option
R10-03E(SM)	3 hour emergency pack
R10-03(SM)/DDPRO	DALI Addressable Downlight Emergency Pack